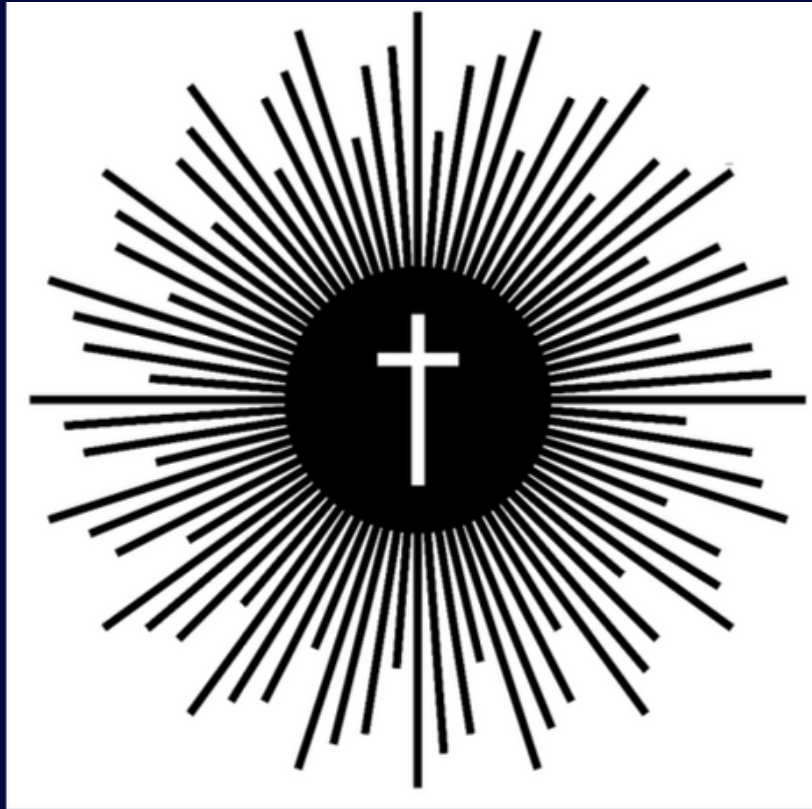


ST. MALACHY CATHOLIC SCHOOL

CHRIST BE OUR LIGHT



Through C.L.O.V.E.R.

January 16, 2023 Newsletter

Christ Be Our Light...through C.L.O.V.E.R.

Kennison's Corner

Dear Parents,

I imagine new History and Social Studies books published and released in the next few years will call the last three years the COVID Years with pictures of masks, toilet paper, and Now Hiring signs on every street corner. Next, would be a time called the Recovery Years which is the time we are all experiencing now with the cost of everything increasing due to supply and demand of goods, not enough employees, shipping costs, and other factors. The school ministry, like most families, has been impacted by the rising costs and inflation. The school ministry receives a subsidy from the church each year of \$250,000 to \$500,000. This subsidy, in part, is to support the church's largest ministry and to make up the difference between the cost to educate a child and the rate of tuition. The change to Flat Rate tuition is in no way intended to negatively impact families to the point that they cannot afford to send their children to St. Malachy; therefore, we created the Shamrock Family Scholarships. Scholarships will be awarded based on stewardship to the church or school – NOT income based. I pray and want all 497 children to remain at St. Malachy; it is their school. Yes, I even want our 8th graders to stay, but I know they must take the next step in their education at the high school that best meets their educational, physical, social and emotional as well as spiritual needs. If you believe you qualify for a Choice Scholarship, we need to get you on an SGO scholarship for this semester to create your track or pathway for the 2023-2024 school year. This scholarship is a \$500 scholarship that would be applied to this current school year's tuition. If you don't qualify, please apply for the Shamrock Family Scholarship. Also, if you would like to confirm your qualifications or lack of qualifications, please contact me or John Kiefer (jkiefer@stmalachy.org), and we can walk/talk through your individual situations.

I encourage all families to attend one of our tuition informational meetings. We have two meetings scheduled: Monday, January 16 at 3:00 pm in the school cafeteria and Thursday, January 19 at 6:00 pm in the Holy Family Room at church. If you are not able to attend either meeting, please contact me or John Kiefer with any questions.

In Christ,

Mrs. Sandra Kennison, Principal

Christ Be Our Light...through C.L.O.V.E.R.

BIG “R” AWARDS

Congratulations to the following students who were chosen by staff for displaying one of the
3 “R” traits: Respect, Responsibility and Resembling God

Travis Maxwell
Nicholas Rushenberg
Elizabeth Roldan-Perez
Rachel Brown
Jaxson Cardis
Alonna Koelling
Luke Moreno
Meredith VanGheem
Nicholas Platz
Addy Mattson
Davis Watson
Kyle Gibson
Emmalee Maxwell
Nyah Alcorn
Matthew Yemane
Emmie Diaz
Aoife Taheny
Zachary Waddell
Parker Schenkel
Tiwa Olabintan
Gianna Goins
Alexis Fetzner-Roell
Reagan Shields
Noah Scott
Ruthie Miller
Nuala Sweeney
Kam Gehring
Etta Feller

Charlotte Fenol
Samantha Smith
Austin Braun
Peter Rushenberg
Evelyn Harrity
John Morgan
Caroline Fernandez
Caroline Fernandez
Mila Oyhamburu
Bryce Gutzwiller
Nathan Desta
Ryan Koonce
Lucca Oyhamburu



Christ Be Our Light...through C.L.O.V.E.R.

Good news! We will be applying for a Blue Ribbon award as we exceeded the minimum test scores needed. See the chart below and 2022 ILEARN comparison scores on the next page. Our school improvement goals for English Language Arts (ELA) and Math on ILEARN are as follows:

Year 1 (22-23) — 76.2% proficient to 80% proficient.

Year 2 (23-24) — 80% proficient to 83% proficient.

Year 3 (24-25) — 83% proficient to 86% proficient.

Percentiles for Nonpublic School to Use in the 2023 Blue Ribbon Application

These scores are to be used to assist nonpublic schools in determining if they will qualify for the Blue Ribbon award

Top 15% Pass Rate

Student Group	2022 ILEARN		St. Malachy's Scores	
	ELA	MATH	ELA	MATH
All Students	55.8%	62.1%	76.20%	76.20%

Top 40% Pass Rate

Student Group	2022 ILEARN		St. Malachy's Scores	
	ELA	MATH	ELA	MATH
Free/Reduced Lunch	32.1%	32.8%	70.0%	63.0%
Special Education	13.9%	17.9%	45.5%	45.5%
English Language Learner	14.8%	21.9%	NA	NA
Asian	66.7%	72.2%	80.0%	80.0%
Black	25.0%	20.2%	92.9%	78.6%
Hispanic	33.8%	33.9%	85.0%	70.0%
Multiracial	39.1%	38.0%	92.9%	78.6%
White	46.7%	49.6%	73.0%	76.4%

Christ Be Our Light...through C.L.O.V.E.R.

Indiana Learning Evaluation
Assessment Readiness
Network ILEARN

Spring 2022
Scores at a glance
Grades 3-8



CATHOLIC SCHOOLS
ARCHDIOCESE OF INDIANAPOLIS

English Language Arts																								
State of Indiana						Archdiocese of Indianapolis						St. Malachy						Brownsburg						
	Below proficiency	Approaching proficiency	At proficiency	Above proficiency	PASSED %		Below proficiency	Approaching proficiency	At proficiency	Above proficiency	PASSED %		Below proficiency	Approaching proficiency	At proficiency	Above proficiency	PASSED %		Below proficiency	Approaching proficiency	At proficiency	Above proficiency	PASSED %	
Grade																								
3	30771	16648	19278	13219	40.7%		335	307	455	412	57.5%		8	7	18	21	72.2%		96	133	200	301	68.6%	
4	29885	17800	17473	15845	41.1%		354	336	476	441	57.1%		4	4	14	13	77.1%		78	116	190	354	73.7%	
5	29679	18198	22540	10684	41.0%		319	342	583	314	57.6%		3	9	17	14	72.1%		78	101	294	283	76.3%	
6	30444	19652	20145	11940	39.0%		302	377	505	363	56.1%		6	9	18	18	70.6%		100	142	264	234	67.3%	
7	26040	21941	21158	14206	42.4%		205	358	512	471	63.6%		3	3	17	14	83.8%		87	150	272	301	70.7%	
8	25152	23210	21277	15351	43.1%		180	328	512	485	66.2%		2	4	14	21	85.4%		91	151	254	314	70.1%	
Proficient Percentage 41.2 %						Proficient Percentage 59.6%						Proficient Percentage 76.2%						Proficient Percentage 71.1%						
Mathematics																								
State of Indiana						Archdiocese of Indianapolis						St. Malachy						Brownsburg						
	Below proficiency	Approaching proficiency	At proficiency	Above proficiency	PASSED %		Below proficiency	Approaching proficiency	At proficiency	Above proficiency	PASSED %		Below proficiency	Approaching proficiency	At proficiency	Above proficiency	PASSED %		Below proficiency	Approaching proficiency	At proficiency	Above proficiency	PASSED %	
Grade																								
3	23624	14843	23116	18362	51.9%		220	262	529	506	68.2%		1	7	20	26	85.2%		69	68	210	383	81.2%	
4	26252	16236	23674	14830	47.5%		294	310	616	388	62.4%		0	4	17	14	88.6%		70	76	256	336	80.2%	
5	28585	19397	18469	14630	40.8%		307	433	448	371	52.5%		3	7	18	15	76.7%		60	95	230	369	79.4%	
6	34011	18930	16756	13408	35.5%		386	385	456	320	50.2%		5	9	12	25	72.5%		71	127	242	298	73.2%	
7	34529	22163	15129	11441	31.9%		384	446	396	317	46.2%		7	5	12	13	67.6%		91	153	229	335	68.8%	
8	38393	21232	13044	12229	29.8%		449	403	309	344	43.4%		6	8	7	20	65.9%		110	166	184	348	65.8%	
Proficient Percentage 39.4 %						Proficient Percentage 53.9 %						Proficient Percentage 76.2 %						Proficient Percentage 74.7%						
Science																								
State of Indiana						Archdiocese of Indianapolis						St. Malachy						Brownsburg						
	Below proficiency	Approaching proficiency	At proficiency	Above proficiency	PASSED %		Below proficiency	Approaching proficiency	At proficiency	Above proficiency	PASSED %		Below proficiency	Approaching proficiency	At proficiency	Above proficiency	PASSED %		Below proficiency	Approaching proficiency	At proficiency	Above proficiency	PASSED %	
Grade																								
4	35201	14595	16582	14472	38.4%		415	326	430	436	53.9%			9	12	10	62.9%		142	118	214	263	64.7%	
5	27268	22825	21222	10591	38.8%		250	437	543	316	55.6%		7	15	15	14	56.9%		67	142	266	254	71.3%	
Proficient Percentage 38.6%						Proficient Percentage 54.7%						Proficient Percentage 59.3%						Proficient Percentage 68%						
Social Studies																								
State of Indiana						Archdiocese of Indianapolis						St. Malachy						Brownsburg						
	Below proficiency	Approaching proficiency	At proficiency	Above proficiency	PASSED %		Below proficiency	Approaching proficiency	At proficiency	Above proficiency	PASSED %		Below proficiency	Approaching proficiency	At proficiency	Above proficiency	PASSED %		Below proficiency	Approaching proficiency	At proficiency	Above proficiency	PASSED %	
Grade																								
5	35913	13970	17545	13512	38.4%		397	263	429	468	57.6%		7	4	17	15	74.4%		175	116	196	268	61.5%	
Proficient Percentage 38.4%						Proficient Percentage 57.6 %						Proficient Percentage 74.4%						Proficient Percentage 61.5%						
ELA & Math Summary																								
		ELA & Math Total Proficient	ELA & Math Total Tested	ELA & Math proficiency %			ELA & Math Total Proficient	ELA & Math Total Tested	ELA & Math proficiency %			ELA & Math Total Proficient	ELA & Math Total Tested	ELA & Math proficiency %			ELA & Math Total Proficient	ELA & Math Total Tested	ELA & Math proficiency %					
Grade																								
3		28778	79857	36.0%			793	1509	52.6%			37	54	68.5%			482	730	66.0%					
4		27764	80938	34.3%			786	1607	48.9%			25	35	71.4%			512	738	69.4%					
5		25217	81005	31.1%			678	1558	43.5%			27	43	62.8%			532	754	70.6%					
6		22923	82000	28.0%			644	1546	41.7%			30	51	58.8%			447	738	60.6%					
7		22410	83097	27.0%			642	1542	41.6%			25	37	67.6%			497	808	61.5%					
8		21612	84773	25.5%			610	1505	40.5%			26	41	63.4%			472	808	58.4%					
Total		148704	491610	30.2%			4153	9267	44.8%			170	261	65.1%			2942	4576	64.3%					

Christ Be Our Light...through C.L.O.V.E.R.

2nd Quarter Honor Roll '22-23

High Honors

8th Grade

Florence Akakpo
Oscar Bard
Simone Deximo
Eileen Ellis
Nathan Prevost
Gwyneth Pritchard
Mya Richer
Noah Stornetta
Max Townsend
Elijah Wright

7th Grade

Scarlet Adler
Mary Buck
JJ Cline
Lara Kendall
Ginny Kokosa
Jackson Lambert
Tim McCluskey
Noah McGraw
Rhys Minch
Alexa Moore
Emily Parada
Izzy Rawski
John Skiba
Aoife Then
Macey Zeunik

6th Grade

Marie Claire Akakpo
Damian Cain
Elyse Crevier
Ben Hopf
Emily Parra
Emmett Ransdell
Mackenzie Richer
AJ Waddell

Honors

8th Grade

Mikayla Dotse
Kam Gehring
Samantha Kiefer
Hanna Manley
Lili Manley
Thomas Manley
Murth Ramsey
Todd Reynolds
Ryne Seiwert

7th Grade

Nicholas Bell
Simon Borem
Sophie Braun
Lanie Dalton
Dylan Dial
Sophia Dixon
Fox Fenol
Abby Hernandez
Noah Jedlicka
Andrew Jines
Liam Lee
Jackson Ly
Patrick Olabintan
Ryan Rokita
Ava Selby
Josh Selby
Frank Stutler

6th Grade

Dominick Ansara
Leo Bard
Devin Butz
Nahom Desta
Leo Ellis
Jonathan Fetzner-Roell
Beau Green
Connor Harrity
Ellery Henninger
Hunter Hopf
Piper May
Alan Navas-Brito
Claire Nesbit
Henry Pritchard
Taylor Schenkel
Natalie Selby
Bradley Seneque
Natalie Sippel
Rachel Stites
Tim VanGheem
Micah Wright

Christ Be Our Light...through C.L.O.V.E.R.

Hernandez Happenings - Social Emotional Learning

It's hard to believe that the second grading period has come to an end, and we are halfway through the school year! In our Second Steps lessons, the classes are finishing up Unit 2. Unit 2 focused on feelings, regulating big emotions, and identifying bullying and harassment. This unit brought on many great conversations and questions from all grade levels. The goal for this unit is to have students feel safe and comfortable seeking out a trusted adult for help and giving students strategies to help navigate feelings or situations that involve bullying or harassment.

1st-The first grade has been working on noticing others' feelings by reading body language. In our lessons, it was stressed that it is not only important to recognize your own feelings, but also to know how others are feeling. The emotions of worried, calm, and frustrated were the key focus of this unit.

2nd-Second grade has been identifying reasons for feeling proud and disappointed and using positive self-talk to help themselves feel better. Students were also able to recognize that different people have different feelings about the same situation based on their experiences.

3rd-Third grade has been exploring what information emotions give them. Angry and happy were the two emotions third grade focused on and the strategy of taking a break when an emotion gets too big.

4th-Fourth grade started off unit 2 talking about why it is important to manage strong emotions. This lead into what rethinking a situation is and how to do it. As a group, we practiced rethinking situations based on personal experiences.

5th-Fifth grade talked about recognizing recurring situations that cause them to feel strong emotions. Stress was the emotion talked about in fifth grade. Students worked on being able to identify signs of stress in themselves and what causes them to feel stress. Then, the group worked on finding one change they could make to manage stress and how to make that change.

Middle School-Unit 2 focused on recognizing bullying and harassment and understanding why it happens. There were discussions about the effects of being bullied or harassed, the difference between joking around and bullying, and the different factors that contribute to bullying and harassment. Then, we dove into the different types of bullying and harassment. It was stressed to the students that bullying and harassment should be reported to a trusted adult, and they were given strategies on how to speak up and be an upstander when encountering bullying or harassment. The final activity will be creating informational posters on bullying for our school.

Christ Be Our Light...through C.L.O.V.E.R.

St. Malachy Chess Class!

Chess Classes

(kindergarten to 8th grade)

Link <http://www.learningthroughgames.com/st-malachy-chess/>

(good for new or returning students!)



This program is great for ALL levels and grades (kindergarten through 8th) and is taught in a fun way! Classes (one day a week) are being offered at St. Malachy beginning Wednesdays after school until 3:15 pm, January 18th thru March 8.

“Learning Through Games” has taught Multiple State Champion Scholastic Teams. Teaching is always done in a child-friendly way.

Sign up here:

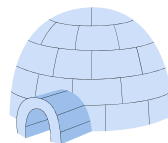
Cost is \$98 for sessions (payable to Learning Through Games, 11504, Senie Lane. Carmel, IN.(or leave it at the front desk)

PayPal option: send information and \$98 to adean@learningthroughgames.com or zelle to 3172246771 or venmo Aaron-Dean- 91

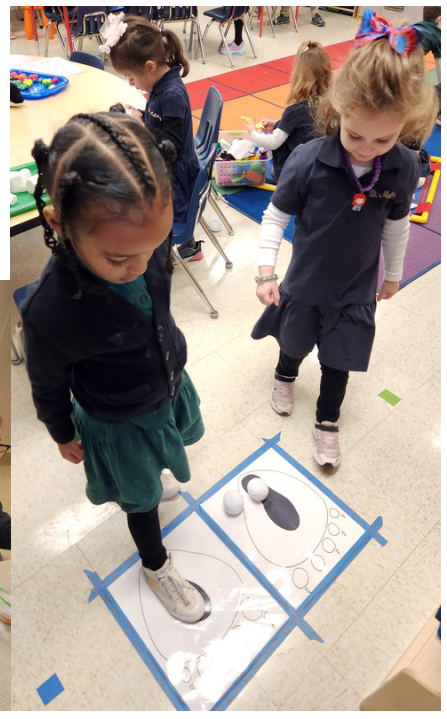
Childs name: _____ Grade _____ Parent Contact _____

Phone number _____ Email: _____

Feel free to contact us if you have any questions: Aaron Dean 317 224-6771 or adean@learningthroughgames.com

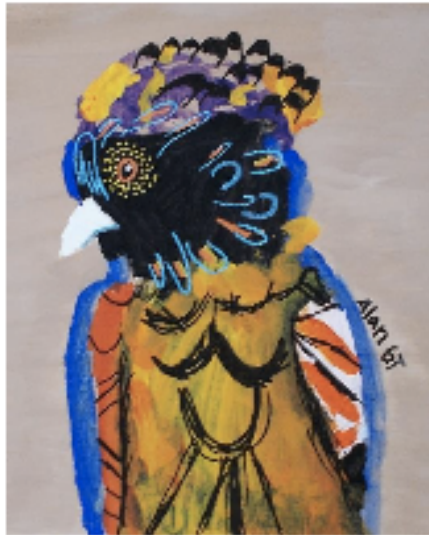


Pre-K Explores Polar Bears and Igloos!



Christ Be Our Light...through C.L.O.V.E.R.

**THESE STUDENTS WILL REPRESENT SMS AT THE
ARCHDIOCESE LEGACY GALA ART AUCTION. CONGRATS!**



**ALAN NAVAS-BRITO
SIXTH GRADE
ST. MALACHY**



**MILLIE MCGRAW
THIRD GRADE
ST. MALACHY**



**SHANE LEE
SIXTH GRADE
ST. MALACHY**



**BEAU GREEN
SIXTH GRADE
ST. MALACHY**

Christ Be Our Light...through C.L.O.V.E.R.

21st Century Scholars

7th and 8th grade parents: Your children may be eligible for a college scholarship

Indiana's 21st Century Scholars program offers income-eligible Hoosier students up to four years of paid tuition at an eligible Indiana college or university after they graduate from high school, dependent upon financial need. In middle and high school, Scholars are connected to programs and resources to help them stay on track for college and career success. Once in college, Scholars receive support to complete their college degrees and connect to career opportunities. 7th and 8th grade Indiana students whose families meet income eligibility guidelines can apply to become a 21st Century Scholar. Applications must be received by June 30 of the student's 8th grade year.

As a Scholar, you pledge to:

- ✓ Complete the Scholar Success Program in high school and in college, which includes activities at each grade level to help you stay on track for college and career success.
- ✓ Graduate from a state-accredited high school with a minimum of a Core 40 diploma and a cumulative grade point average (GPA) of at least 2.5 on a 4.0 scale.
- ✓ Not use illegal drugs, commit a crime or delinquent act, or consume alcohol before reaching the legal drinking age.
- ✓ File the Free Application for Federal Student Aid (FAFSA) by April 15 as a high school senior and each year thereafter until you graduate from college.
- ✓ Apply to an eligible Indiana college as a high school senior, and enroll as a full-time student within one year of high school graduation.
- ✓ Maintain Satisfactory Academic Progress (SAP) standards established by my college.
- ✓ Complete 30 credit hours each year you are in college to stay on track toward earning your degree on time.

Apply online at [Scholars.IN.gov](https://scholars.in.gov) and provide:

- ☐ Student's Social Security Number, date of birth and address.
- ☐ Parent or guardian's Social Security Number or Individual Taxpayer Identification Number, if applicable.
- ☐ 2021 gross income amounts for all members of the household. If applying after December 31, 2022, use 2022 gross income.
- ☐ A valid email address (free email accounts are available at Yahoo.com, Gmail.com, Hotmail.com, and Live.com).

21st Century Scholars Program Income Guidelines (2022-2023)

Household Size	Maximum Annual Income
2	\$33,874
3	\$42,606
4	\$51,338
5	\$60,070
6	\$68,802
For each additional person in the household add \$8,732.	

Scholars@che.IN.gov



1-888-528-4719

Christ Be Our Light...through C.L.O.V.E.R.

21st Century Scholars Program - What is it?

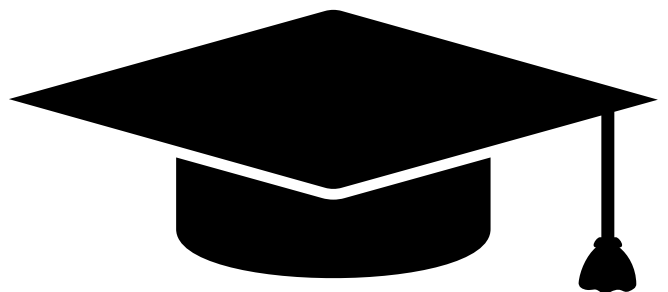
The 21st Century Scholarship is....

An opportunity for students to afford college in Indiana. The 21st Century Scholarship pays up to 100% of tuition at public colleges in Indiana and part of the tuition at private or independent colleges. Learn more about the schools, colleges, and universities that accept the 21st Century Scholarship.

The scholarship does not cover the cost of books, room and board, parking fees, lab fees, or any other fees that are not assessed to all students.

The scholarship process is open to 7th and 8th grade students and applications must be received by June 30th of the student's 8th grade year.

To find out more information on the 21st Century Scholars program and apply please visit learnmoreindiana.org. The site also has information on other paths available after high school and how to create a graduation plan that aligns with your child's plans after high school. It is a great resource for parents who are beginning the high school process soon!



Christ Be Our Light...through
C.L.O.V.E.R.

CYO BINGO

JANUARY 21, 2023

License Number 000663

PRESENTED BY:

Lauck & Veldhof
FUNERAL AND CREMATION SERVICES

20

\$60 PER PERSON

23

**MUST BE 21 TO ATTEND
EVENING INCLUDES DINNER, BEER,
WINE, SOFT DRINKS AND SNACKS**

10 GAMES OF BINGO WITH CASH PRIZES UP TO \$500

DOORS OPEN AT 6:30 PM / GAMES BEGIN AT 7:30 PM

AT PRIMO BANQUET HALL 2615 NATIONAL AVE

SPONSORSHIPS ARE AVAILABLE

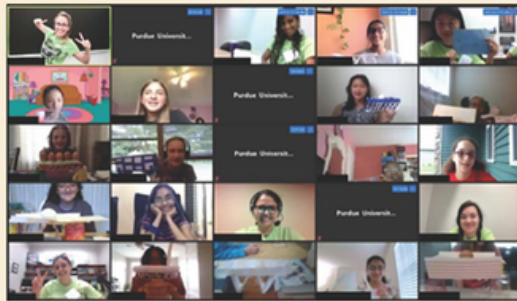


**REGISTER ONLINE BY
JANUARY 11, 2023**

Christ Be Our Light...through
C.L.O.V.E.R.

Connecting Engineers online

Saturday January 28th, 2023
1:00 - 3:00pm on Zoom



Destination: Purdue



Passenger: You!!!

**Be the boss of your future!
Explore your creativity!**

7th and 8th grade students meet virtually with Purdue engineering student mentors through engaging challenges. Hands-on projects with simple household items from the comfort of your home!

Scan the QR code to register!
Limited spots available!

PASSPORT



Women in Engineering Program

Christ Be Our Light...through C.L.O.V.E.R.

St. Malachy Ministry Notes: Join Us!



MIDDLE SCHOOL YOUTH MINISTRY

QUEST

RIGHT TO LIFE
CELEBRATION!

JAN 20TH, 6:00-7:30
SHAMROCK CAFE



PLEASE REGISTER

Join us for a full
day, Eucharistic
centered, Women's
Retreat



January 21st
St. Malachy School Café
\$25* registration
*cost includes meals

Church Directory Photography
Schedule your appointment today!



Photography Dates

February 14th, '23
through
March 11th, '23

For online scheduling go to
www.ucdir.com
Church Code: **IN1817**
Password: **photos**

**It's time
for our New Directory!**



**Our Church Directory
will not be complete
without you!**

- View your images immediately.
- Everyone photographed receives a complimentary 8 x 10 portrait & directory.
- Additional portraits available for purchase on the day of photography.

UNIVERSAL
CHURCH DIRECTORIES
Ministry Minded, Family Focused.


ST. MALACHY · SCHOOL CAFE · FOLLOWING 6:15PM MASS

YOUNG ADULT GAME NIGHT

BYOB (favorite alcoholic beverage to share) & Party Game

TUESDAY, JANUARY 24

LIVING THE CLOVER
LIFE PODCAST



Female Doctors Of The Church

St Teresa of Avila
St Catherine of Siena
St Therese of Lisieux
St Hildegard of Bingen

KNOW-IT-ALL




JAN 28

WHO IS THE SMARTEST IN THE ROOM?
7410 N CR 1000 E
BROWNSBURG, IN 7PM - 10PM
REGISTER YOUR TEAM OF 8 TODAY

Marriage on Purpose Conference 2023

with Dr. Andrew and Sarah Swafford

Sat, Feb 11th
@ St. Malachy



A beautiful marriage is
the work of a lifetime.

Register @
marriageonpurpose.info

Christ Be Our Light...through C.L.O.V.E.R.

OUR MISSION

To Jesus, through Mary, by means of our redemptive suffering for the salvation of souls, we will grow a field of C.L.O.V.E.R. at St. Malachy

Confession

- Increase total number of confessions in a year
- Encourage memorization of "Act of Contrition" prayer
- Teach examination of conscience & 10 commandments
- Teach definition of sin
- Teach asceticism (fasting)
- Encourage Divine Mercy Chaplet and memorization of DMC prayers

Life

- Increase participation in 40 Days for Life
- Inform community on current Life issues and policies
- Teach Catholic Social Teaching
- Restructure all Outreach ministry to Catholic "Life" focus
- Encourage infant baptisms

Our Lady

- Encourage Rosary & memorization of Rosary prayers
- Teach Brown Scapular and encourage wearing Brown scapular
- Teach True Devotion to Mary
- Teach Consecration to Immaculate Heart of Mary
- Increase number of consecrations to Immaculate Heart of Mary

Vocations

- Personal witnesses of seminarians & religious sisters
- Increase number of seminarians & religious women in formation
- Develop Marriage Prep Program
- Teach discernment
- Teach Theology of the Body
- Bishop Brute visits

Eucharist

- Increase number spending time in Adoration
- Increase number attending weekday/Sunday Masses
- Teach genuflection
- Teach Real Presence
- Teach Mass "ministers" true roles & reverence
- Create Perpetual Adoration Chapel

Revealed Word

- Encourage reading & memorization of Sacred Scripture
- Teach typology
- Teach Catechism of the Catholic Church (Scriptural grounding)
- Increase FORMED subscriptions/activity

