

# Shamrock Summertime 2021

## **Ages 5-12:**

### **Week 1: Backyard Fun Camp – June 1-June 4**

Summer is here! Lots of outdoor games and activities! Campers will enjoy fun and friendly competition during this week.

### **Week 2: Arts Alive Camp– June 7– June 11**

Discover your artistic talent while you create masterpieces using a variety of art mediums. Art will be made both inside and outdoors.

### **Week 3: Crazy Concoctions – June 14 – June 18**

Discover the wonderful world of science through experiments and tons of crazy concoctions!

### **Week 4: All Sports of Fun—Summer Olympics– June 21 – June 25**

Sportsmanship, teamwork and fun! Join this camp to develop skills to be a champion on the court, field and with your friends!

### **Week 5: The Great Outdoors – June 28– July 2**

Get outdoors and practice camping and fishing. Enjoy camp games and making fun camping food! Great for spending time in nature.

### **Week 6: Wacky Water Week – July 5 — July 9**

Get ready to get wet with all the water-filled games and activities this week! Water balloons, water play, and more!

### **Week 7: Guess Who? – July 12– July 16**

Refine your detective and observation skills! Make spy kits, top secret notepads, and I Spy games. Have fun searching for clues and solving mysteries!

### **Week 8: Summer Safari – July 19 – July 23**

Don't miss this summer safari where we will learn about God's creatures during this exciting expedition!

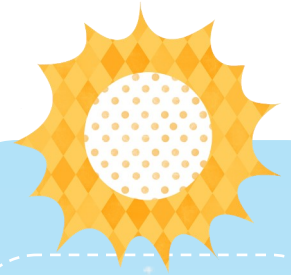
### **Week 9: STEMtastic Structures – July 26– July 30**

Have fun put your building and design ideas to work in constructing structures such as bridges, houses, waterslides, and more!

## **Ages 3-5:**

### **Clover's Clubhouse *Preschool Summer Camp* \*\***

**\*\*see separate flier for details**

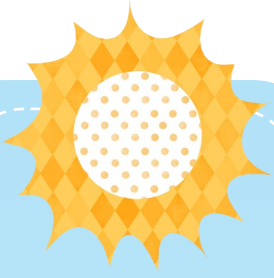


St. Malachy Catholic School  
7410 North County Road 1000 E  
Brownsburg, IN 46112  
Phone 317-852-2242  
Fax 317-852-3604

Shamrock Summertime  
Camp Director: Benita Wheeler  
[extday@stmalachy.org](mailto:extday@stmalachy.org)

St. Malachy Parish is excited to offer the Shamrock Summertime program for children ages 5 to 12 and Clover's Clubhouse for preschool children ages 3-5. We will focus on education, religion, outdoors, and fun! The summer campers can choose from nine different themed weeks with activities that will begin at 7:00 a.m. through 6:00 p.m. Snacks will be provided but a brown bag lunch is required.





Walk-in/one day  
drop off rate—\$50

\*\*All forms of payment  
are acceptable that day.

## Shamrock Summertime 2021 Payment Matrix

Camp hours are available from 7:00am to 6:00pm.

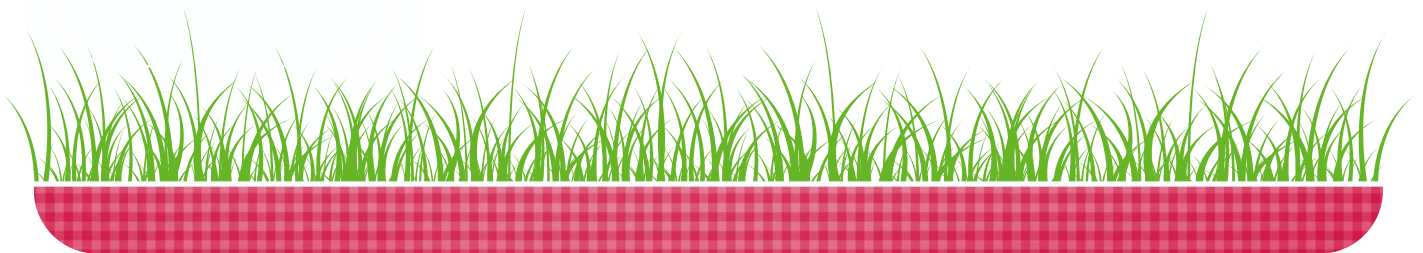
Camp fees are weekly rates allowing parents to choose their check-in and pickup times. Weeks 1 is a holiday week; therefore, the fees reflect the shorter week.

	1st Child	2nd Child	3rd Child
WEEK 1	\$144	\$110	\$95
WEEK 2	\$180	\$135	\$115
WEEK 3	\$180	\$135	\$115
WEEK 4	\$180	\$135	\$115
WEEK 5	\$180	\$135	\$115
WEEK 6	\$180	\$135	\$115
WEEK 7	\$180	\$135	\$115
WEEK 8	\$180	\$135	\$115
WEEK 9	\$180	\$135	\$115

\*\*Campers are not required to stay for the entire day. No discounts for partial days.

\*\*For more than three children please contact Mrs. Bostrom.

\*\*All payments are final



## St. Malachy's Shamrock Summertime Payments Made Easy

St. Malachy requires automatic payments. The process is very simple and will have you writing one less check each month, it will also eliminate the possibility of late payments for you. Simply fill out the Automatic Debit Authorization Form below and turn it in with your registration. Each week, on the Thursday before a registered week, your payment will automatically transfer from your bank account into St. Malachy's bank account. If you do not have sufficient funds in your account to cover the withdrawal, you will receive a non-sufficient funds notification and be required to pay the fee in person along with a \$20 surcharge. The first transfer will occur on May 27, 2021 for week #1 and the last transfer will occur on July 22, 2021 for week #9. Fee payments are not subject to adjustments due to illness, vacation, absences, or weather closings. If you have any questions or concerns about Automatic Shamrock Summertime Payments, please contact John Kiefer in our Business Office, 317-852-3195, ext. 7101.

### Automatic Debit Authorization Form

I authorize St. Malachy Catholic Church and the State Bank of Lizton to initiate debits from my (check one) \_\_\_\_\_ Checking \_\_\_\_\_ Saving account.

The authority will remain in effect May 27, 2021 through July 22, 2021. I can stop payment of any withdrawal by notifying my financial institution and St. Malachy 7 days before my account is charged. I understand that debits will only be processed on the Thursday before a registered week.

Printed Name: \_\_\_\_\_

Signature: \_\_\_\_\_

Address: \_\_\_\_\_

\_\_\_\_\_

Phone: \_\_\_\_\_

Email: \_\_\_\_\_

Date: \_\_\_\_\_

My Bank's Name: \_\_\_\_\_

My Bank's Routing Number: \_\_\_\_\_

(The routing number is the first 9 digits at the bottom left of your check)

My Bank Account Number: \_\_\_\_\_

Date to Start Debiting Account: \_\_\_\_\_



**Week #1 (\$144/child)**

Fee Child #1\_\_\_\_\_

Fee Child #2\_\_\_\_\_

Fee Child #3\_\_\_\_\_

TOTAL FEE \$\_\_\_\_\_

**Week #2 (\$180/child)**

Fee Child #1\_\_\_\_\_

Fee Child #2\_\_\_\_\_

Fee Child #3\_\_\_\_\_

TOTAL FEE \$\_\_\_\_\_

**Week #3 (\$180/child)**

Fee Child #1\_\_\_\_\_

Fee Child #2\_\_\_\_\_

Fee Child #3\_\_\_\_\_

TOTAL FEE \$\_\_\_\_\_

**Week #4 (\$180/child)**

Fee Child #1\_\_\_\_\_

Fee Child #2\_\_\_\_\_

Fee Child #3\_\_\_\_\_

TOTAL FEE \$\_\_\_\_\_

**Week #5 (\$180/child)**

Fee Child #1\_\_\_\_\_

Fee Child #2\_\_\_\_\_

Fee Child #3\_\_\_\_\_

TOTAL FEE \$\_\_\_\_\_

**Week #6 (\$180/child)**

Fee Child #1\_\_\_\_\_

Fee Child #2\_\_\_\_\_

Fee Child #3\_\_\_\_\_

TOTAL FEE \$\_\_\_\_\_

**Week #7 (\$180/child)**

Fee Child #1\_\_\_\_\_

Fee Child #2\_\_\_\_\_

Fee Child #3\_\_\_\_\_

TOTAL FEE \$\_\_\_\_\_

**Week #8 (\$180/child)**

Fee Child #1\_\_\_\_\_

Fee Child #2\_\_\_\_\_

Fee Child #3\_\_\_\_\_

TOTAL FEE \$\_\_\_\_\_

**Week #9 (\$180/child)**

Fee Child #1\_\_\_\_\_

Fee Child #2\_\_\_\_\_

Fee Child #3\_\_\_\_\_

TOTAL FEE \$\_\_\_\_\_

Please list the children's name , age, and grade they will be entering this fall:

Child

#1\_\_\_\_\_Age\_\_\_\_\_Grade\_\_\_\_\_

Child

#2\_\_\_\_\_Age\_\_\_\_\_Grade\_\_\_\_\_

Child

#3\_\_\_\_\_Age\_\_\_\_\_Grade\_\_\_\_\_

